

GP2000-2 2V2000AH

GP SERIES-Telecom Battery



Specification

Nominal Voltage	2V	
Nominal Capacity(10HR)	2000AH	
Dimension	Length	476±3mm (18.74 inches)
	Width	337±3mm (13.26 inches)
	Container Height	340±3mm (13.38 inches)
	Total Height (with Terminal)	341±3mm (13.42 inches)
Approx Weight	Approx 119 kg (262.04lbs)	
Terminal	T11	
Container Material	ABS	
Rated Capacity	2020.0 AH/202.0A	(10hr, 1.80V/cell, 25°C/77°F)
	1755.5 AH/351.1A	(5hr, 1.75V/cell, 25°C/77°F)
	1603.2 AH/534.4A	(3hr, 1.75V/cell, 25°C/77°F)
	1228.0 AH/1228.0A	(1hr, 1.60V/cell, 25°C/77°F)
Max. Discharge Current	16000A (5s)	
Internal Resistance	Approx 0.28 mΩ	
Operating Temp. Range	Discharge : -15~50°C (5~122°F)	
	Charge : 0~40°C (32~104°F)	
	Storage : -15~40°C (5~104°F)	
Nominal Operating Temp. Range	25±3°C (77±5°F)	
Cycle Use	Initial Charging Current less than 600.0 A. Voltage	
	2.4V~2.5 V at 25 °C(77 °F)Temp. Coefficient -5mV/°C	
Standby Use	No limit on Initial Charging Current Voltage	
	2.25V~2.3V at 25 °C(77 °F)Temp. Coefficient -3mV/°C	
Capacity affected by Temperature	40°C (104 °F)	103%
	25°C (77 °F)	100%
	0°C (32 °F)	86%
Self Discharge	JYC GP series battery may be stored for up to 12 months at 25°C(77°F) and then a freshening charge is required. For higher temperatures the time interval will be shorter.	

Applications

- ◆ Tele-communication central station (wired or cellular)
- ◆ Power system communication, military communication, etc.
- ◆ Network communication including: data transmission, television signal transmission, etc.
- ◆ Uninterruptable Power System (UPS- for Telecom)

ISO 9001	ISO 14001	OHSAS 18001	TLC
CE	RoHS	UL	Battery

Constant Current Discharge (Amperes) at 25 °C (77°F)

End	15min	30min	45min	1h	2h	3h	4h	5h	10h
1.60V	3004	2132	1587	1228	843.2	566.0	428.1	365.0	206.0
1.65V	2943	2096	1566	1213	828.1	559.9	424.1	362.1	205.6
1.70V	2842	2036	1532	1187	803.1	549.7	418.0	358.3	204.8
1.75V	2690	1946	1481	1149	765.3	534.4	408.3	351.1	203.8
1.80V	2498	1832	1416	1101	717.0	515.4	397.4	343.4	202.4

Constant Power Discharge (Watts) at 25 °C (77°F)

End	15min	30min	45min	1h	2h	3h	4h	5h	10h
1.60V	5623	3960	2958	2274	1529.1	1109.0	840.0	713.1	408.1
1.65V	5518	3885	2906	2235	1511.2	1097.1	831.0	709.2	406.2
1.70V	5344	3760	2819	2169	1481.0	1077.3	818.0	702.3	403.2
1.75V	5083	3572	2688	2071	1435.2	1037.6	797.0	693.1	398.7
1.80V	4752	3334	2523	1947	1378.4	1010.0	772.0	681.4	393.3

Note The above data are average values, and can be obtained with 3 charge/discharge cycles. These are not minimum values.

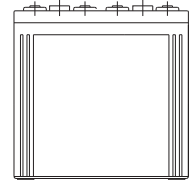
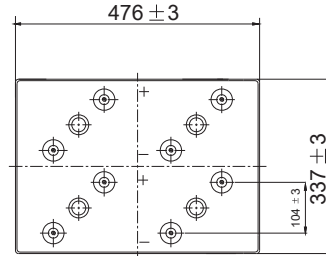
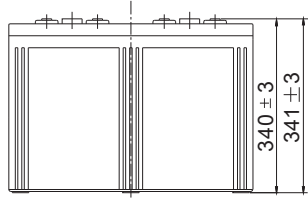
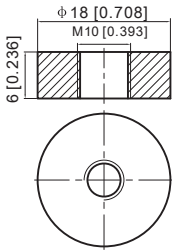
GP2000-2 2V2000AH

GP SERIES-Telecom Battery

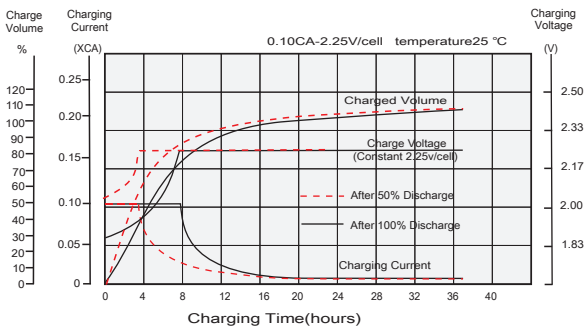
Dimensions

T11 Terminal

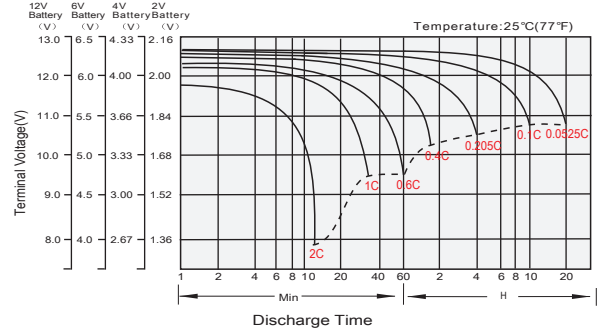
Unit: mm [inches]



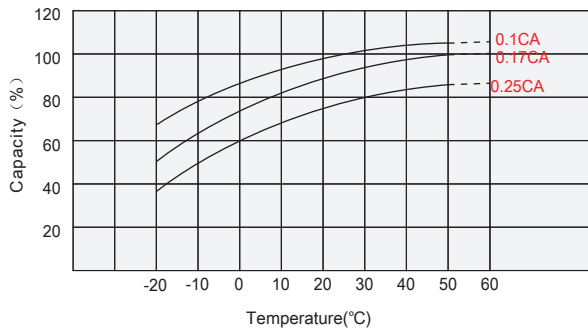
Float Charging Characteristics



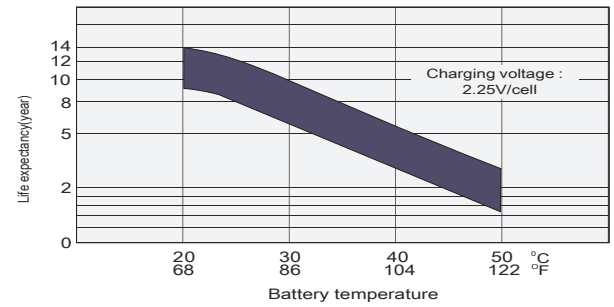
Discharge Characteristics



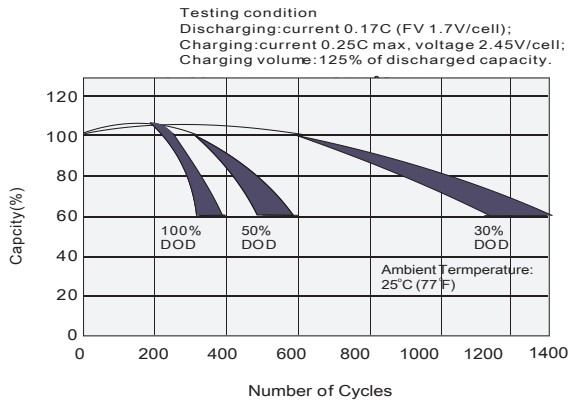
Temperature Effects in Relation to Battery Capacity



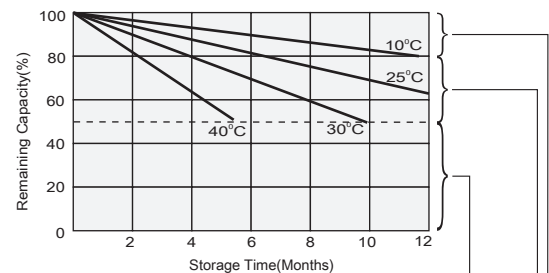
Effect of Temperature on Long Term Float Life



Cycle Life in Relation to Depth of Discharge



Self Discharge Characteristics



Supplementary charge may often fail to recover the capacity. The battery should never be left standing till this is reached.

Supplementary charge required before use. Optimal charging way as below:
1. Charged for a above 3 days at limited current 0.25CA and constant voltage 2.25V/cell.
2. Charged for a above 20 hours at limited current 0.25CA and constant voltage 2.45V/cell.
3. Charged for 8-10 hours at limited current 0.05CA.

No supplementary charge required
(Carry out supplementary charge before use if 100% capacity is required.)